

Business

Speech pathologist stresses early Intervention

Evaluations help catch problems **before** they set in

By Melissa K. Steele

Staff writer

melissa.steele@doverpost.com

Kathleen Capitan speaks a lot in R's and S's. For a speech pathologist, those two letters tend to be the most difficult for young talkers to form. Catching them early is key to correcting their speech and helping them speak clearly.

"Everyone has their own system. I tend to be more conservative and want to **correct** it at an early age," she said.

Capitan recently opened her own speech center, the Central Delaware Speech-Language Pathology Inc., after working for a health network in New Jersey. The 1999 Caesar Rodney graduate earned a Bachelor of Science in speech pathology from Loyola College in Maryland followed by a similar master's degree from James Madison University.

Language is something that always has fascinated her, and Capitan said she originally **intended to major** in lin-

guistics or anthropology. When she entered college and realized they offered speech pathology - a major that also would give her the chance to work with children - she said it was a perfect fit.

Most of her clients have come from word-of-mouth referrals but Capitan is getting her name out to doctor's offices and schools for more exposure. Her office sports two observation rooms where parents can watch behind special glass. A stark room is designed for autistic students who tend to be distracted easily, while another room has toys and other playthings to encourage a fun atmosphere while they learn to speak correctly, she said.

A group room is used for classes such as a Saturday language melody group that incorporates music into the learning process.

"**They** don't know they're working because they have so much fun,"

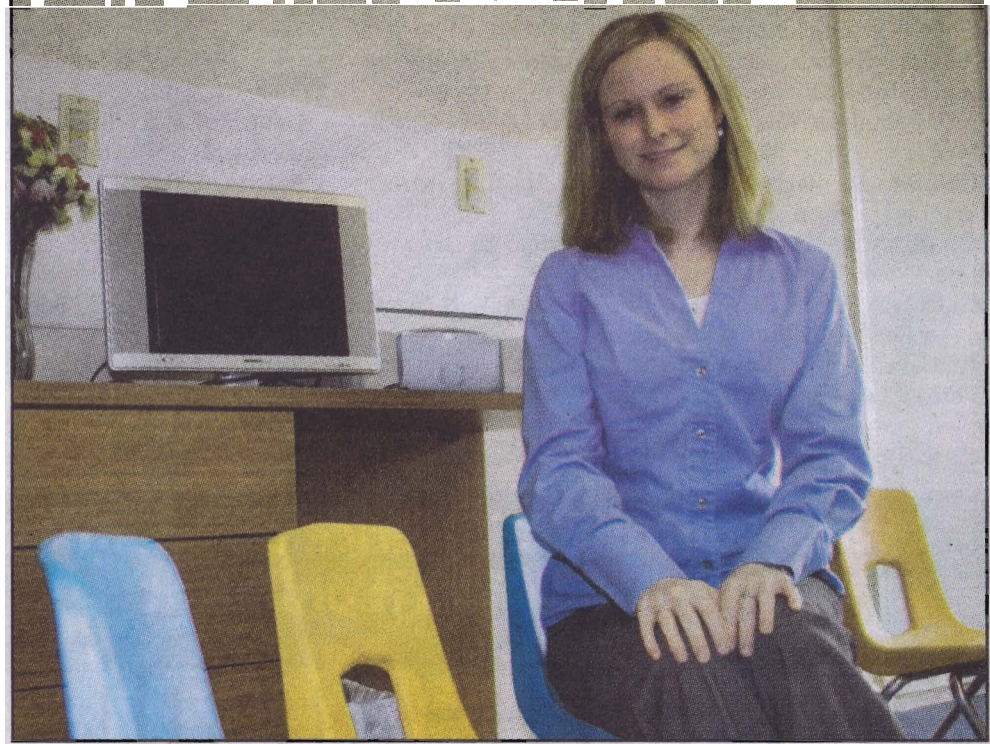
Capitan said.

Capitan works on a Monday through Saturday schedule with appointments starting at 9 a.m. and running into the evening if needed to accommodate patients who want after-school or weekend hours.

The center is located at 1326 S. Governors Ave. across from All Seasons Nursery.

Capitan is offering free 30-minute screenings through March for interested patients, to determine whether speech sessions are needed.

For more information on the services offered or to schedule an appointment, call 674-3350, email kati@cdslp.net or Kathleen Capitan.MS. CCC-SLP has opened Central Delaware Speech-Language Pathology, Inc. to help improve speech patterns for children and young adults. visit www.cdslp.net.



Melissa K. Steele photo

Kathleen Capitan.MS. CCC-SLP has opened Central Delaware Speech-Language Pathology, Inc. to help improve speech patterns for children and young adults.

State's draft energy plan up for public comment

The Governor's Energy Advisory Council's Draft Delaware Energy Plan is now available for public comment on DNREC's website, www.delaware.gov and on the Delaware Energy Office website, www.energy.dnrec.delaware.gov.

energy resources, including renewable energy and energy efficiency as a means of ensuring energy security and long term sustainability of Delaware's energy resources.

In Kent County, the session will be held from 5 to 7 p.m. Wednesday,

March 4, at the Richardson and Robbins Auditorium, 89 Kings Highway, Dover.

Written comments also will be accepted and must be submitted by 4:30 p.m., March 12 by email to DNREC_EnergyPlan@state.de.us.